

UNIVERSITY OF WASHINGTON

Search | Directories | Reference Tools

Learning @ the Leading Edge

Come to the UW

- Admission ▷
- Continuing Education ▷
- Employment ▷
- Visitor Information ▷
- UW Medicine ▷
- Support UW ▷
- Academic Resources**
- Departments ▷
- Libraries ▷
- Teaching ▷
- International ▷
- Computing ▷
- For the UW Community**
- Student Guide ▷
- Administrative Gateway ▷
- Human Resources ▷
- Research Guide ▷
- Alumni Information ▷
- About the UW**
- President McCormick ▷
- Regents ▷
- Strategies and Initiatives ▷
- Diversity ▷
- Campus Information ▷
- News ▷
- Events ▷
- Husky Sports ▷



Live View of Seattle Campus 11/8/2002 9:27am

**Seattle Area Weather:** Temperature: 51F, 11C (44F, 7C wind chill). Winds: 8 mph from the SE (10 mph gusts). Barometric pressure: 29.18 in (988 mbar). Relative humidity: 78%. [Seattle forecast](#). The sun rose today at 7:05 and will set at 16:42. The moon is waxing crescent with 20% of the moon's visible disk illuminated.

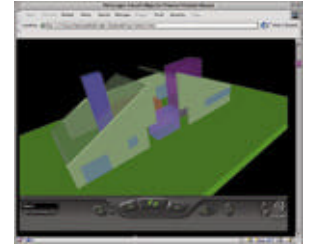


- [OpenUW](#)
- [Free mini-courses](#)
- [UW Frequently Asked Questions](#)
- FAQ:** How to apply to the UW, find people, and get answers to other questions

News and Announcements

Next generation tools: The



microprocessor, keyboard, and mouse have replaced simple tools of architecture, altering the way designers work

**Marked but risky:** Crosswalks without traffic signals, stop signs increase older pedestrians' risk of being struck by motor vehicles

**Regents select interim president :**

Regents select Huntsman as interim president, Thorud as acting provost More from [University Week](#), the faculty/staff newspaper

**More opportunities for flu shots:** Hall Health Primary Care Center offers shots Nov. 7, 14 and 21

More from [University Week](#), the faculty/staff newspaper

[More News Releases...](#)

**Spotlight on Departments**

**AI-based Mobile Robotics Lab:**

Research on systems that interact with their environment in an intelligent way. Includes the AIBO Legged Robot League, an autonomous plant care system, assisted cognition for people with Alzheimer's disease, NurseBot, museum tour-guides, and more.



The University of Washington Home Page is provided by Computing & Communications. To find the contact you need, please check the [Frequently Asked Questions](#) or call 206-543-2100. Each UW department has its own [postal address and ZIP code](#). © 1994-2002, University of Washington, including all photographs and images unless otherwise noted.