

Tufte's Design Principles



CS 4460 – Intro. to Information Visualization
November 18, 2014
John Stasko

Please see appropriate books for missing images

Today's Agenda

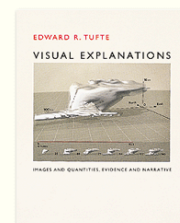
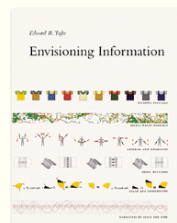
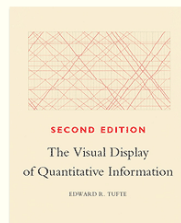


Edward Tufte has written seven books, including *Visual Explanations*, *Envisioning Information*, *The Visual Display of Quantitative Information*, and *Data Analysis for Politics and Policy*. He writes, designs, and self-publishes his books on analytical design, which have received more than 40 awards for content and design. He is Professor Emeritus at Yale University, where he taught courses in statistical evidence, information design, and interface design. His current work includes landscape sculpture, printmaking, video and a new book.

This website describes Edward Tufte's books, one-day course, and artwork. For further information, call Graphics Press at 203 272-9187, or fax 203 272-8600, or [email](mailto:et@graphicspress.com).

For a moderated forum on analytical design, go to [ASK E.T.](http://www.edwardtufte.com/ask-et/)

BOOKS



Graphical Excellence



- Principles
 - Graphical excellence is the well-designed presentation of interesting data---a matter of *substance*, of *statistics*, and of *design*
 - Graphical excellence consists of complex ideas communicated with clarity, precision and efficiency

According to Tufte

Fall 2014

CS 4460

3

Graphical Excellence



- Principles
 - Graphical excellence is that which gives to the viewer the greatest number of ideas in the shortest time with the least ink in the smallest space
 - Graphical excellence is nearly always multivariate
 - And graphical excellence requires telling the truth about the data

Fall 2014

CS 4460

4

Leveraging Human Capabilities



- Data graphics should complement what humans do well

“We thrive in information-thick worlds because of our marvelous and everyday capacities to select, edit, single out, focus, organize, condense, reduce, boil down, choose, categorize, catalog, classify, list, abstract, scan, look over, sort, integrate, blend, inspect, filter, lump, skip, smooth, chunk, average, approximate, cluster, aggregate, outline, summarize, itemize, review, dip into, flop through, browse, glance into, leaf through, skim, refine, enumerate, glean, synopsisize, winnow the wheat from the chaff, and separate the sheep from the goats.” **Vol.2, page 50**

Summary



- 1. Tell the truth
 - Graphical integrity
- 2. Do it effectively with clarity, precision...
 - Design aesthetics

Let's look at each of these

1. Graphical Integrity



- Your graphic should tell the truth about your data

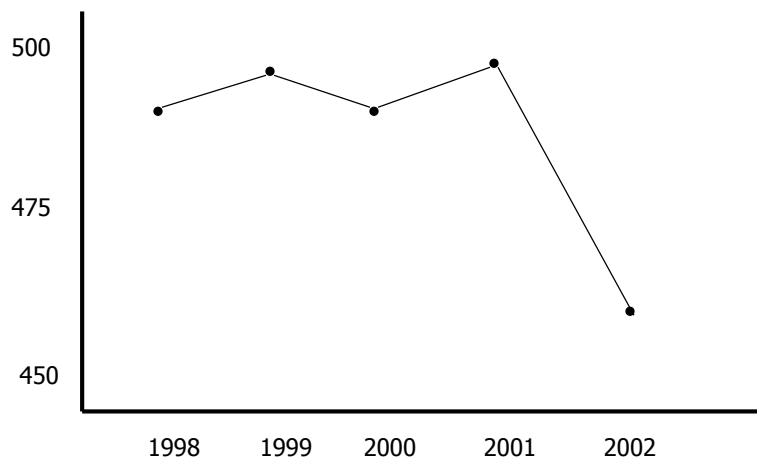
Fall 2014

CS 4460

7

Example

Stock market crash?

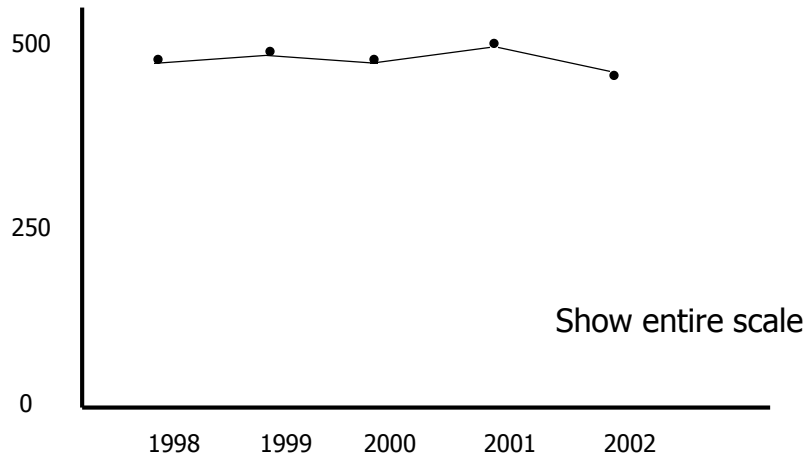


Fall 2014

CS 4460

8

Example

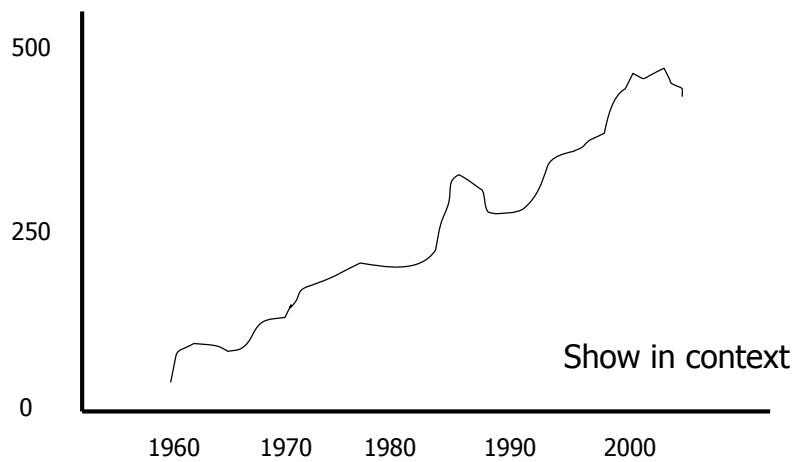


Fall 2014

CS 4460

9

Example



Fall 2014

CS 4460

10

Chart Integrity



- Where's baseline?
- What's scale?
- What's context?

Fall 2014

CS 4460

11

Vol 1, p. 54 (1)

Where's 0?
Note middle '70



Fall 2014

CS 4460

12

Vol 1, p 54 (2)



What's being compared?

Fall 2014

CS 4460

13

Vol 1, 57



Scale?

Fall 2014

CS 4460

14

Vol 1, p. 61



Scale?

Fall 2014

CS 4460

15

Vol 1, p. 74



Great work!

Fall 2014

CS 4460

16

Vol 1, p. 74



Ahhhh

Show the context

Fall 2014

CS 4460

17

Local Example

A huge rise?

Atlanta Journal Constitution
Summer '08



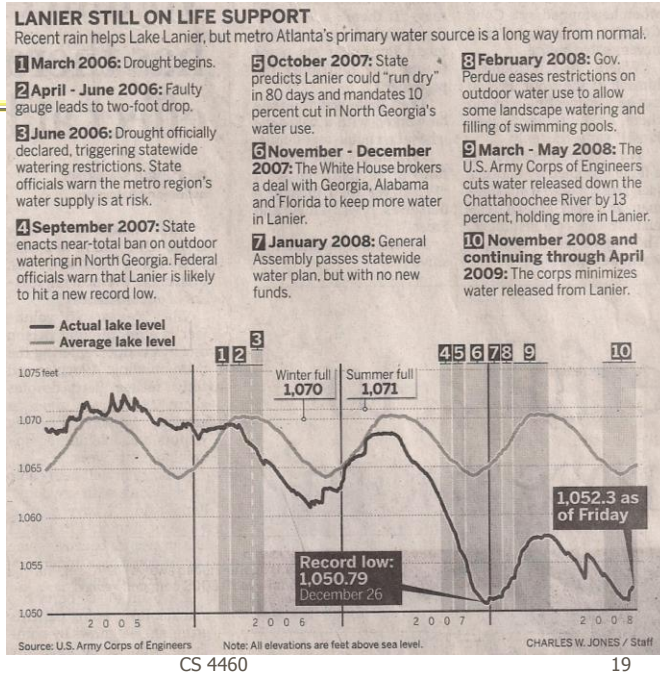
Fall 2014

CS 4460

18

More of the
data

Atlanta Journal
Constitution
Dec. '08



Fall 2014

Watch Size Coding



- Height/width vs. area vs. volume

Fall 2014

CS 4460

20

Vol 1, p. 69



area = value?

Fall 2014

CS 4460

21

Vol 1, p. 62



volume = value?

Fall 2014

CS 4460

22

Measuring Misrepresentation



- Visual attribute value should be directly proportional to data attribute value

$$\text{Lie factor} = \frac{\text{Size of effect shown in graphic}}{\text{Size of effect in data}}$$

$$\text{p.62} \quad 9.4 = \frac{4280}{454}$$

Fall 2014

CS 4460

23

2. Design Aesthetics



- Set of principles to help guide designers

Fall 2014

CS 4460

24

Design Principles



- Maximize data-ink ratio

$$\text{Data ink ratio} = \frac{\text{Data ink}}{\text{Total ink used in graphic}}$$

= proportion of graphic's ink devoted to the non-redundant display of data-information

Fall 2014

CS 4460

25

Vol 1, p. 94



Good

Bad

Fall 2014

CS 4460

26

Vol 1, p. 30



Outstanding

Fall 2014

CS 4460

27

More...



- Above all else, show the data
- Maximize the data-ink ratio
- Erase non-data-ink
- Erase redundant data-ink
- Revise and edit

Fall 2014

CS 4460

28

More...



- Maximize data density

$$\text{data density of graphic} = \frac{\text{number of entries in data matrix}}{\text{area of data graphic}}$$

Quote ...

Fall 2014

CS 4460

29

Maximize Data Density



“Data-rich designs give a context and credibility to statistical evidence. Low-information designs are suspect: what is left out, what is hidden, why are we shown so little? High-density graphics help us to compare parts of the data by displaying much information within the view of the eye: we look at one page at a time and the more on the page, the more effective and comparative our eye can be. The principle, then, is:

Maximize data density and the size of the data matrix, within reason.”

Vol 1, p 168

Fall 2014

CS 4460

30

Redesign charts



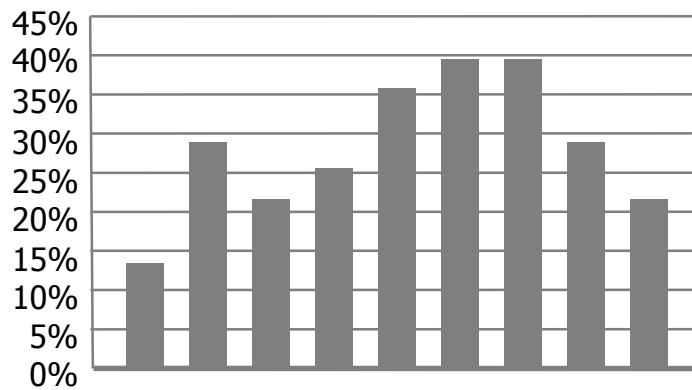
- Bar chart, scatter plot, box plot

Fall 2014

CS 4460

31

Bar chart

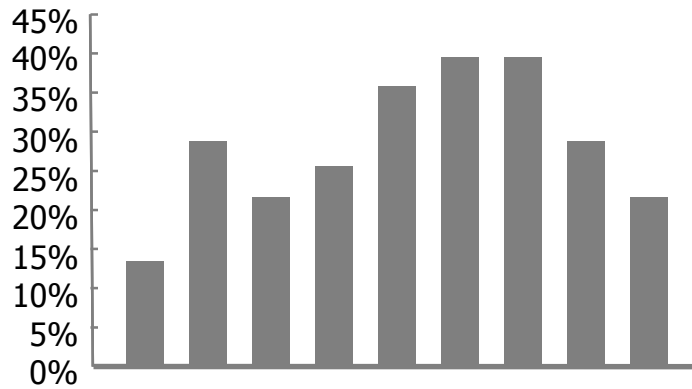


Fall 2014

CS 4460

32

Bar chart

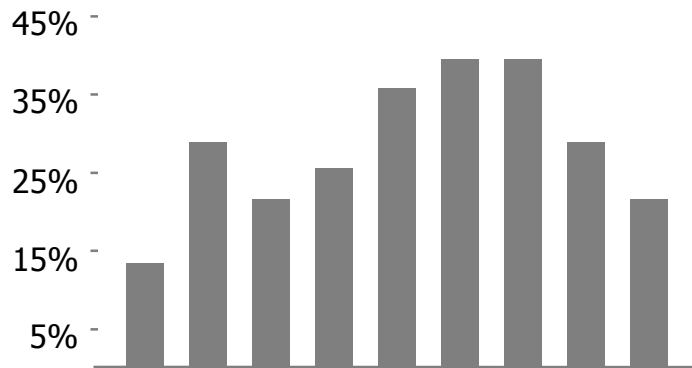


Fall 2014

CS 4460

33

Bar chart

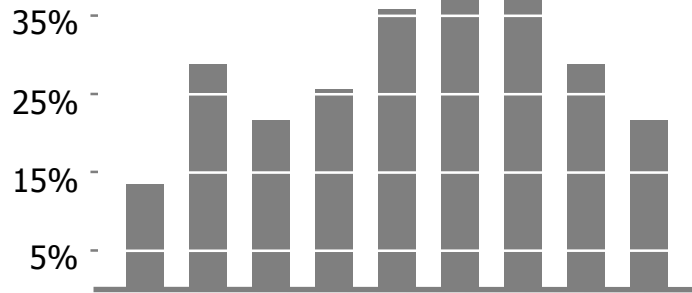


Fall 2014

CS 4460

34

Bar chart

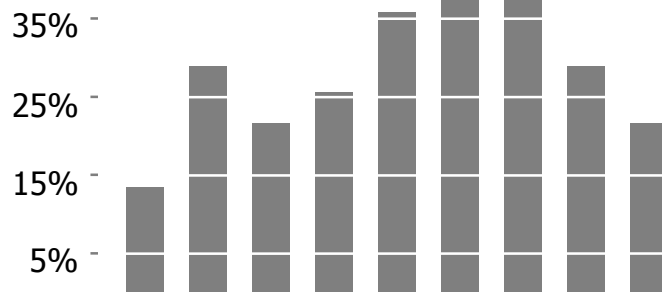


Fall 2014

CS 4460

35

Bar chart

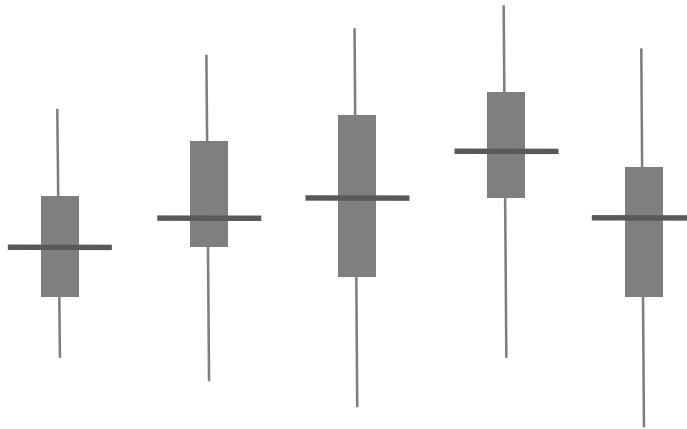


Fall 2014

CS 4460

36

Box plot

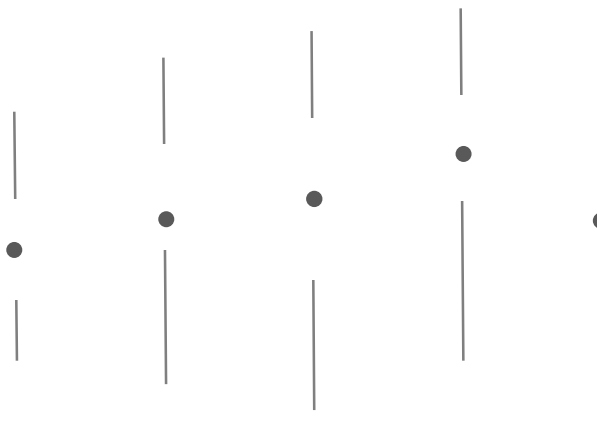


Fall 2014

CS 4460

37

Box plot

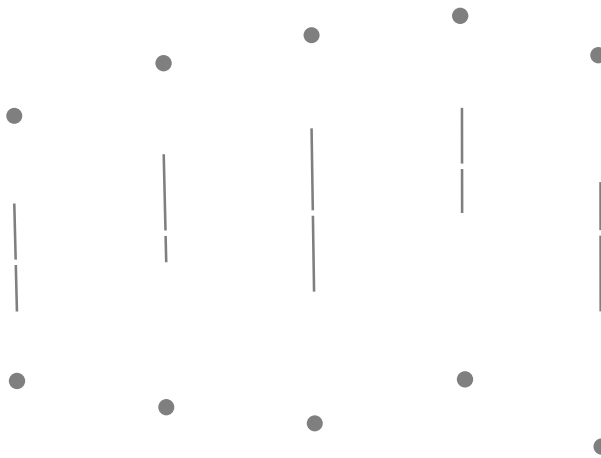


Fall 2014

CS 4460

38

Box plot

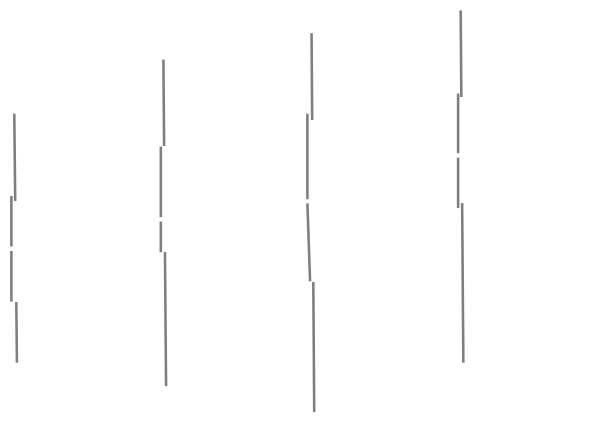


Fall 2014

CS 4460

39

Box plot

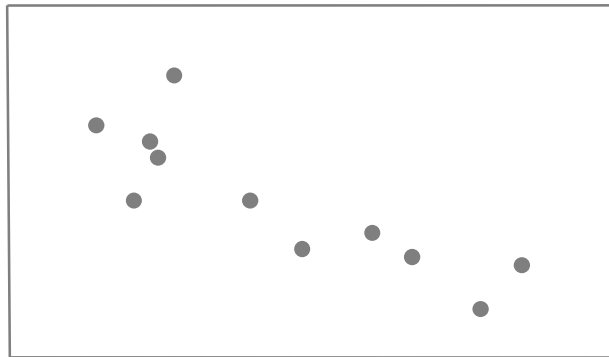


Fall 2014

CS 4460

40

Scatter plot

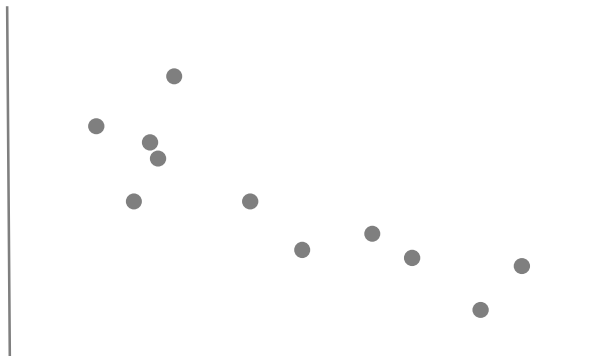


Fall 2014

CS 4460

41

Scatter plot

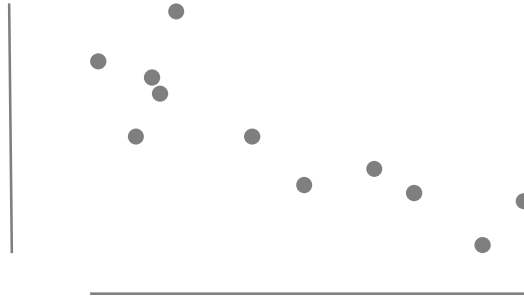


Fall 2014

CS 4460

42

Scatter plot

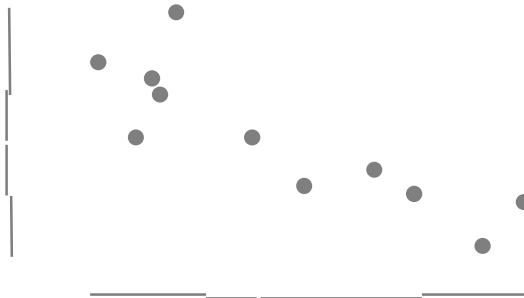


Fall 2014

CS 4460

43

Scatter plot



Fall 2014

CS 4460

44

Design Principles



- **Avoid chartjunk**
 - Extraneous visual elements that detract from message

Fall 2014

CS 4460

45

Vol 1, p 108



Fall 2014

CS 4460

46

Vol 2, p.34



A classic

Diamonds Were A
Girl's Best Friend

Fall 2014

CS 4460

47

<http://www.usatoday.com/news/snapshot.htm>

USA Today



USA TODAY Snapshot

On Christmas Eve, 48% of adults who say they leave snacks for Santa set out cookies and milk.

Snacks for Santa

Snack	Percentage
Cookies and milk	48%
Cookies	29%
Cookies, milk and candy	2%

By Anne R. Carey and Keith Cooper, USA TODAY
Source: Opinion Research Corp. for Letdata

Advertisement
symantec

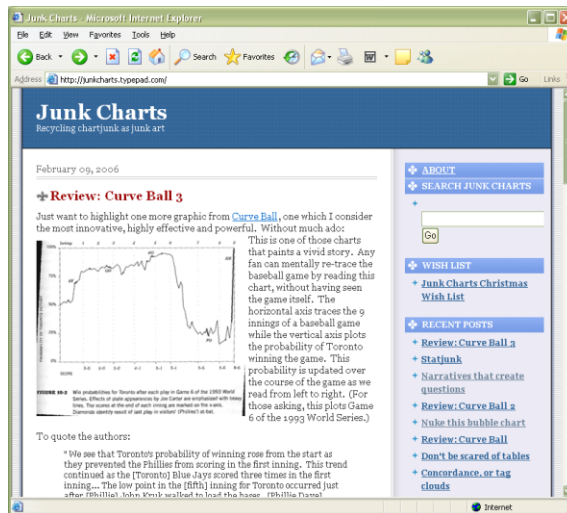
Fall 2014

CS 4460

48

<http://junkcharts.typepad.com/>

Junk Charts Blog



Fall 2014

CS 4460

49

More Thoughts



Great narrative: Vol.2, bottom page 33-34

Fall 2014

CS 4460

50

Rethink That?



CHI 2010: Graphs

April 10–15, 2010, Atlanta, GA, USA

Useful Junk? The Effects of Visual Embellishment on Comprehension and Memorability of Charts

Scott Bateman, Regan L. Maandryk, Carl Gutwin, Aaron Green, David McDine, Christopher Brooks
 Department of Computer Science, University of Saskatchewan, Saskatoon, Saskatchewan, Canada
 scott.bateman@usask.ca, regan@cs.usask.ca, gutwin@cs.usask.ca, aaron.green@usask.ca, david@cs.usask.ca, cbrooks@cs.usask.ca

ABSTRACT
 Guidelines for designing information charts often state that the presentation should reduce "chart junk" — visual embellishments that are not essential to understanding the data. In contrast, some popular chart designers argue that presented data is distorted and obscured imagery, mixing the questions of whether this imagery is useful or detrimental to understanding or has been proposed, and whether the visual embellishment may have other benefits. To investigate these issues, we conducted an experiment that compared embellished charts with plain ones, and measured both comprehension accuracy and long-term recall. We found that people's accuracy in describing the embellished charts was no worse than the plain charts, and that their recall after a two-to-three-week gap was significantly better. Although we are cautious about recommending that all charts be published in full HTML, our results question some of the premises of the minimalist approach to chart design.

Author keywords:
 Charts, Information Visualization, Imagery, Memorability

ACM Classification Keywords:
 H.5.m. Information interfaces and presentation (e.g., HCI); M.0. Metrics

General Terms:
 Design, Human Factors

INTRODUCTION

Many experts in the area of chart design, such as Edward Tufte, criticize the inclusion of visual embellishments in charts and graphs; their guidelines for good chart design often suggest that the addition of chart junk, decorations and other kinds of non-essential imagery, to a chart can make comprehension more difficult and can obscure readers from the data [27]. This minimalist perspective advocates plain and simple charts that maximize the proportion of data ink — or the ink to the chart used to represent data.

Previous work has argued in both support of all or part of this view, but also in opposition. For example, the perceived value of chart junk was measured in a laboratory for profit or consumer of enterprise and for information visualization. The results of this study are reported in this paper as well as the implications for the design of charts and graphs in general, in particular in the context of information visualization.

CHI 2010, April 10–15, 2010, Atlanta, Georgia, USA.
 Copyright 2010 ACM 978-1-60558-324-1/10/04...\$5.00.

Despite these minimalist guidelines, many designers include a wide variety of visual embellishments in their charts, from small decorative or large imagery and visual backgrounds. One well-known proponent of visual embellishment in charts is the graphic artist Nigel Holmes, whose work regularly incorporates strong visual imagery into the fabric of the chart [16, e.g., Figure 1].

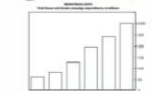


Figure 1. A chart by Holmes [16] (above), and a "plain" version.

These kinds of charts appear regularly in many mass-media publications, and the widespread use of embellished design raises questions about whether the minimalist position on chart design is really the better approach. Two issues in particular are raised: first, whether visual embellishment do in fact cause comprehension problems, and second, whether the embellishments may provide additional information that is valuable for the reader. For example, the added visual imagery in a Holmes-style chart could draw

Compared plain charts to “embellished” charts

Found that the embellished charts were just as good on interpretation accuracy and were recalled better weeks later

Participants also preferred the embellished ones

Some caveats:

- Very simple data
- Very plain plain charts
- Each chart/data is different

My take: It's all about purpose

Fall 2014

CS 4460

51

Design Principles



- Utilize multifunctioning graphical elements (macro/micro readings)
 - Graphical elements that convey data information and a design function

Fall 2014

CS 4460

52

Vol 1, p 140



Fall 2014

CS 4460

53

Vol 1, p. 141



US Army Divisions
going to France in
WW I

Leonard P. Ayres
The War with Germany
1919

Fall 2014

CS 4460

54

Vol 2, p. 36



Michel E. Turgot
Louis Bretz

Plan de Paris
1739

Fall 2014

CS 4460

55

Vol 2, p. 37

Manhattan 1989
Manhattan Map Company



Fall 2014

CS 4460

56

Vol 2, p. 42



Viet Nam Memorial
in Washington D.C.

Maya Ying Lin

58,000+ dead soldiers

Fall 2014

CS 4460

57

Vol 2, p. 44



Fall 2014

CS 4460

58

Vol 2, p. 43



Names listed
chronologically by death

Fall 2014

CS 4460

59

Design Principles



- **Use small multiples**
 - Repeat visually similar graphical elements nearby rather than spreading far apart

Fall 2014

CS 4460

60

Vol 1, p. 170



23 hours of
LA air pollution

Fall 2014

CS 4460

61

Vol 1, p. 173



Chromosomes of
man, chimpanzee,
gorilla & orangutan

Fall 2014

CS 4460

62

Vol 1, p. 174



Consumer
Reports

Fall 2014

CS 4460

63

Vol 2, p. 68



NY Trains

Fall 2014

CS 4460

64

Vol 2, p. 68



How to draw letters

Fall 2014

CS 4460

65

Vol 2, p. 69



Calligraphy

Fall 2014

CS 4460

66

More Recent Additions



Sparklines: theory and practice

Theory of sparklines (small, intense, simple datawords) along with many practical examples of recent sparkline developments. From Edward Tufte's book *Beautiful Evidence*.

-- Edward Tufte, May 27, 2004

Sparklines

Small, repeated graphics (frequently line graphs)

Sparklines: theory and practice

Theory of sparklines (small, intense, simple datawords) along with many practical examples of recent sparkline developments. Excerpts from Edward Tufte, *Beautiful Evidence*. New examples or helpful comments much appreciated.

ET

Sparklines: Intense, Simple, Word-Sized Graphics

THE most common data display is a noun followed by some numbers. For example, a medical patient's current level of glucose is typically reported in a clinical record as a word and number.

Fall 2014

CS 4460

67

Sparkline Examples



Fall 2014

CS 4460

68

Design Principles



- Show mechanism, process, dynamics, and causality
 - Cause and effect are key
 - Make graphic exhibit causality

Space shuttle case we discussed first day

Fall 2014

CS 4460

69

Vol 3, p. 144



Washington Post

Fall 2014

CS 4460

70

Design Principles



- **Escape flatland**
 - Data is multivariate
 - Doesn't necessarily mean 3D projection

Fall 2014

CS 4460

71

Vol 2, p. 12



Guide for visitors to Ise Shrine, Japan

Fall 2014

CS 4460

72

Vol 2, p. 24



Timetable for Java railroad line

Fall 2014

CS 4460

73

Vol 3, p. 90

Music history



Steve Chapple and Reebee Garofalo

Fall 2014

CS 4460

74

Design Principles



- Utilize layering and separation
 - 1+1 = 3 or more
 - Good or bad

Fall 2014

CS 4460

75

Vol 2, p. 54

IBM Series III Copier



Fall 2014

CS 4460

76

Vol 2, p. 61



Fall 2014

CS 4460

77

Design Principles



- Utilize narratives of space and time
 - Tell a story of position and chronology through visual elements

Fall 2014

CS 4460

78

Vol 1, p.43 & Vol 2, p 110



Life of a beetle

L. Hugh Newman

Fall 2014

CS 4460

79

Vol 2, p. 102



Czech air schedule

Fall 2014

CS 4460

80

Vol 2, p. 103



China railway
timetable

Fall 2014

CS 4460

81

Design Principles



- **Content is king**
 - Quality, relevance and integrity of the content is fundamental
 - What's the analysis task? Make the visual design reflect that
 - Integrate text, chart, graphic, map into a coherent narrative

Fall 2014

CS 4460

82

Graph and Chart Tips



- Avoid separate legends and keys -- Just have that information in the graphic
- Make grids, labeling, etc., very faint so that they recede into background

Fall 2014

CS 4460

83

Vol 2, p. 54

New Jersey Transit



Before

After

Fall 2014

CS 4460

84

Vol 2, p. 63



Before

After

Fall 2014

CS 4460

85

Vol 3, p. 74



Before

After

Fall 2014

CS 4460

86

Using Color Effectively



- “The often scant benefits derived from coloring data indicate that even putting a good color in a good place is a complex matter. Indeed, so difficult and subtle that avoiding catastrophe becomes the first principle in bringing color to information: *Above all, do no harm.*”

Fall 2014

CS 4460

87

Proper Color Use



- To label
- To measure
- To represent or imitate reality
- To enliven or decorate

Fall 2014

CS 4460

88

Examples



- The bad...

Fall 2014

CS 4460

89

Vol 1, p. 153



Fall 2014

CS 4460

90

Description



"..despite its clever and multifunctioning data measure, formed by crossing two four-colored grids, this is a puzzle graphic. Deployed here, in a feat of technological virtuosity, are 16 shades of color spread on 3,056 counties, a monument to a sophisticated computer graphics system. But it is surely a graphic experienced verbally not visually. Over and over, the viewers must run little phrases through their minds, trying to maintain the right pattern of words to make sense of the visual montage: "Now let's see, purple represents counties where there are both high levels of male cardiovascular disease mortality and 11.6 to 56.0 percent of the households have more than 1.01 persons per room..."

Fall 2014

CS 4460

91

Vol 2, p. 82



Fall 2014

CS 4460

92

Vol 2, p. 88



“Color’s multidimensionality can also enliven and inform what users must face at computer terminals, although some color applied to display screens has made what should be a straight-forward tool into something that looks like a grim parody of a video game.”

Fall 2014

CS 4460

93

Vol 3, p. 77



Fall 2014

CS 4460

94

Examples



- The good...

Fall 2014

CS 4460

95

Vol 2, p. 91 & Vol 3, p. 76



Fall 2014

CS 4460

96

Vol 2, p. 80



Swiss Mountain Map

Fall 2014

CS 4460

97

Guides for Enhancing Visual Quality



- Attractive displays of statistical info
 - have a properly chosen format and design
 - use words, numbers and drawing together
 - reflect a balance, a proportion, a sense of relevant scale
 - display an accessible complexity of detail
 - often have a narrative quality, a story to tell about the data
 - are drawn in a professional manner, with the technical details of production done with care
 - avoid content-free decoration, including chartjunk

Fall 2014

CS 4460

98

Information Overload



What about confusing clutter? Information overload?
 Doesn't data have to "boiled down" and "simplified"?
 These common questions miss the point, for the quantity of detail is an issue completely separate from the difficulty of reading. *Clutter and confusion are failures of design, not attributes of information.* Often the less complex and less subtle the line, the more ambiguous and less interesting is the reading. Stripping the detail out of data is a style based on personal preference and fashion, considerations utterly indifferent to substantive content. **Vol. 2, p. 51**

Fall 2014

CS 4460

99

Minard graphic



size of army
 direction

latitude
 longitude

temperature
 date

Fall 2014

CS 4460

100

Graphical Displays Should



- Show the data
- Induce the viewer to think about substance rather than about methodology, graphic design the technology of graphic production, or something else
- Avoid distorting what the data have to say
- Present many numbers in a small space
- Make large data sets coherent
- Encourage the eye to compare different pieces of data
- Reveal the data at several levels of detail, from a broad overview to the fine structure
- Serve a reasonably clear purpose: description, exploration, tabulation, or decoration
- Be closely integrated with statistical and verbal descriptions of a data set

Fall 2014

CS 4460

101

Website & Seminar



The Work of Edward Tufte and Graphics Press - Mozilla Firefox

File Edit View History Bookmarks Tools Help

http://www.edwardtufte.com/tufte/

Most Visted Getting Started Latest Headlines 7450 gmail Marietta t2 Zimbra Traffic

HOME BOOKS COURSES POSTERS AND GRAPH PAPER FINE ART SCULPTURE ASK E.T. SHOPPING CART! CHECKOUT

NEW ET WRITINGS, ARTWORKS, NEWS DOGS & OTHERS OF GRAPHICS PRESS POWERPOINT ESSAY

THE WORK OF EDWARD TUFTTE AND GRAPHICS PRESS
GRAPHICS PRESS LLC, P.O. BOX 430, CHESHIRE, CT 06410 800 822-2454 FAX 203 272-8600

PRESENTING DATA AND INFORMATION:
A ONE-DAY COURSE TAUGHT BY EDWARD TUFTTE

Topics covered in this one-day course include:

- fundamental strategies of analytical design
- evaluating evidence used in presentations
- statistical data tables, graphics, and semi-graphics
- business, scientific, research, and financial presentations
- complexity and clarity
- effective presentations: on paper and in person
- interface design
- use of PowerPoint, video, overheads, and handouts
- multi-media, internet, and websites
- credibility of presentations
- animation and scientific visualizations
- many practical examples

Durham, North Carolina [March 9, 2009](#)
[March 10, 2009](#)

Atlanta, Georgia [March 12, 2009](#)
[March 13, 2009](#)

Arlington, Virginia [April 6, 2009](#)
[April 7, 2009](#)
[April 8, 2009](#)

Seattle, Washington [April 28, 2009](#)
[April 29, 2009](#)

Portland, Oregon [May 1, 2009](#)

"One visionary day...the insights of this class lead to new levels of understanding both for creators and viewers of visual displays." WIREP

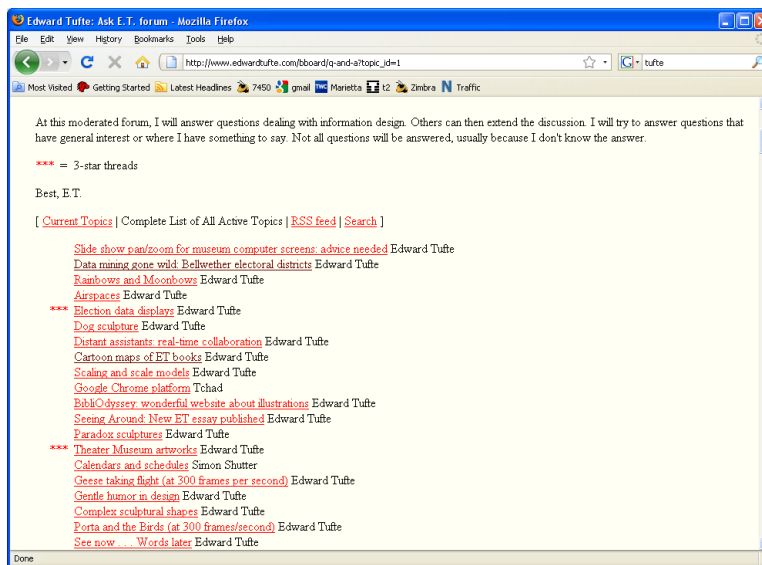
"The Leonardo da Vinci of data" THE NEW YORK TIMES

Fall 2014

CS 4460

102

Discussion Forum

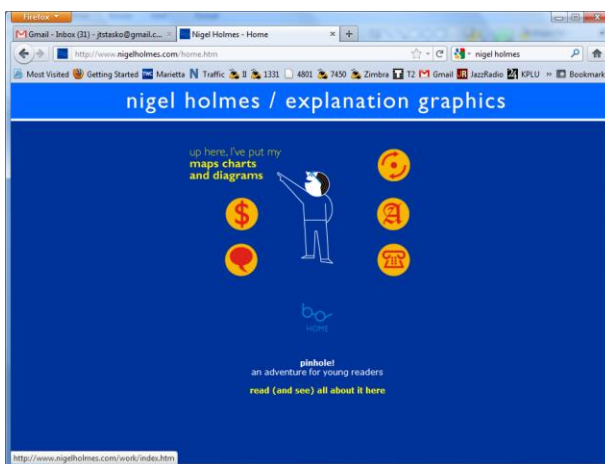


Fall 2014

CS 4460

103

Interesting Contrast



Nigel Holmes

<http://www.nigelholmes.com>

Fall 2014

CS 4460

104

HW 7



- Tableau use & review
- Due Thursday
- Follow the assignment
- Any questions?

Fall 2014

CS 4460

105

Project



- Deliverables
 - Presentation in class (last week)
 - Video
 - 6 minutes max, due on Monday 8th at 5pm
 - Send 1- or 2-page info flier too

Fall 2014

CS 4460

106

Video Advice



- Use Camtasia
 - demo trial version available
- Process
 - 1. Develop script (rehearse timing)
 - 2. Record script
 - 3. Capture video of demo to script
 - 4. Add effects
- You've seen examples all semester
 - eg, <http://www.cc.gatech.edu/gvu/ii/videos.html>

Fall 2014

CS 4460

107

Upcoming



- Visual Analytics
 - Reading
- Evaluation
 - Reading

Fall 2014

CS 4460

108

Sources Used



- E. Tufte, *The Visual Display of Quantitative Information*
- E. Tufte, *Envisioning Information*
- E. Tufte, *Visual Explanations*